

# Barton Elementary School

2214 Pumalo Street, San Bernardino

Principal: Janice Gordon-Ellis

AAIC: Beatriz Barajas-Gonzalez

[www.sbcusd.com/barton](http://www.sbcusd.com/barton)

(909) 388-6534



*The Bulldogs*



**Janice Gordon-Ellis**

Barton School operates on the modified traditional schedule. The staff provides a rigorous instructional program for students in kindergarten through sixth grade. As part of the School Improvement Grant (SIG) implementation, students have attended school for two additional weeks and receive intensive support and enrichment in math, science, reading, writing, English Language Development and the arts. In addition, students in need of academic support are offered tutoring before and after school. Specially designed classes are offered for children who are aurally handicapped and for those who are developmentally delayed and require specially modified instruction. The staff includes an art and music teacher who provides an enriching visual/performing arts program for all students. Barton's Sunrise Program and CAPS have been designated as among the best!

## Special Programs & Awards

- ◆ Grades Served: Kindergarten to 6th grade
- ◆ Special Programs:
  - Sunrise
  - CAPS
- ◆ School Calendar: Modified Traditional
- ◆ 2009-10 Bronze Schools of Achievement Award
- ◆ 2010-11 Bronze Schools of Achievement Award
- ◆ 2011 School on the Move Award

# SCHOOL DATA

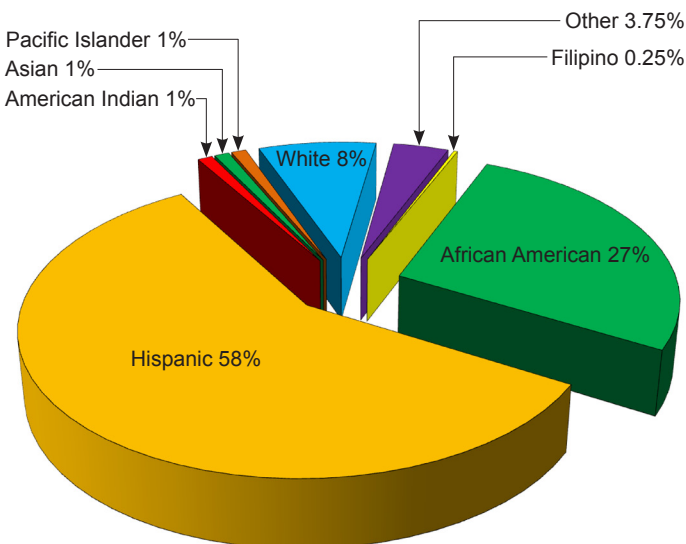
## MISSION STATEMENT

Barton school is an engaging learning environment with high expectations for all students. At Barton, we are demonstrating greatness, growth, and gains in every student, everyday.

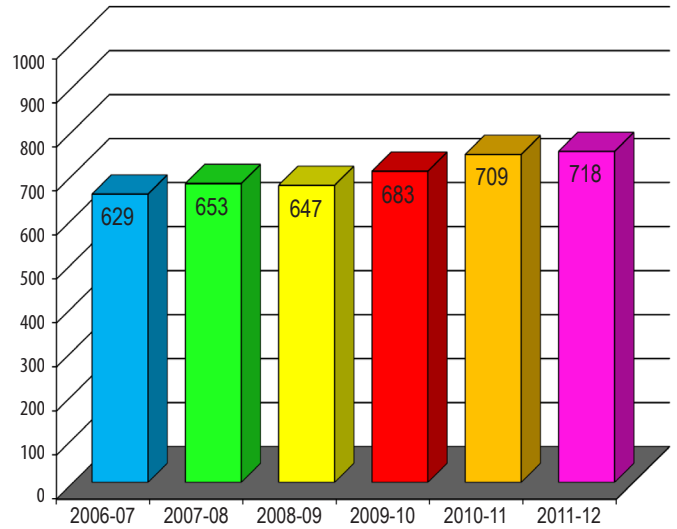
## Student Enrollment

School Year	2007	2008	2009	2010	2011	2012
Enrollment	549	519	524	520	479	495

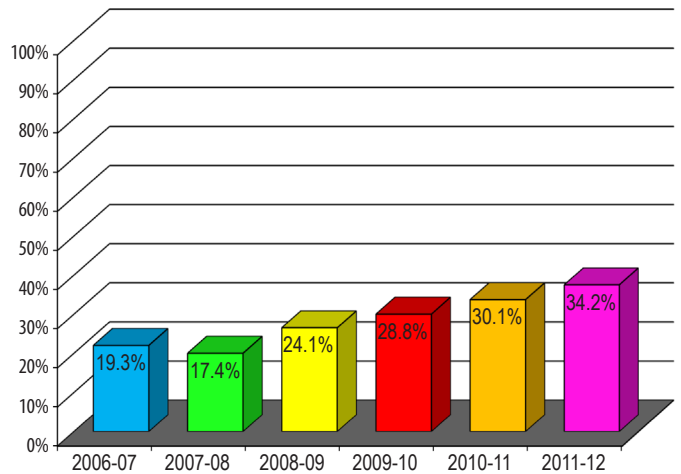
## Ethnic Diversity 2011-2012



## API (Academic Performance Index)



## AYP (Adequate Yearly Progress) ENGLISH LANGUAGE ARTS Percent Proficient and Above



## AYP (Adequate Yearly Progress) MATH Percent Proficient and Above

